

AN ANALYSIS PSYCHOPATISM IN ORPHAN FILM

Munazilfa Musono¹), Restya Fima A.²), Sakina Noviandani W.P³).

Universitas Pekalongan
Indonesia
restyafima23@gmail.com

Abstract

Orphan tells the story of a husband and wife who adopted a nine-year-old daughter who feels from Russia, named Esther. However, since adopting Esther there have been some strange things. Kate tried to find out about Esther and discovered the fact that Esther was a 33-year-old woman named Leena Klammer. She has hypopituitarism, a disorder that causes her to stop growing. Leena pretends to be a little girl who wants to be adopted and has a purpose to seduce and establish a relationship with someone's husband. Leena is a very rude person who has killed 7 people so far. In this study, the author analyzed the main characters in the film who had psychiatric illness using the theory of Sigmund Freud. In this study, using a qualitative descriptive method that explains the intrinsic and extrinsic elements in Orphan films such as through dialogue and scenes in the film which are analyzed using Sigmund Freud's theory. Through this study, the author obtained a specific psychopathic character from the main characters in the film through the theory of Sigmund Freud's Psychoanalysis.

Keywords: Film, Psychoanalysis, Orphan

Introduction

In this modern era films have developed throughout the world that attracts people to express their thoughts or skills. Even everyone, including small children, adults, and even parents, think that film media is very fun to give opinions about phenomena in their lives, most people spend free time watching movies in theaters or on laptops, various opinions watching movies in cinemas produce more on iris images like fantasy or real. According to oxford dictionary that a film is a series of a moving picture theater recorded that tells a story, shown on television or at cinema/moving theater. Film is not always as an entertainment but also recognized as

an art form. Film analysis generally use characters as objects, in this case the characters that can be analyzed are to find character unconsciousness.

One of the movies that get people's attention, especially in the year 2009 is the Orphan movie. The movie was released on July 24, 2009. This movie was directed by Jaume Collet-Serra. The movie has horror genre and starring Isabelle Fuhrman as the main character. Orphan is the movie tells about Kate Coleman and her husband John, are experiencing strains in their marriage after Kate's third child was stillborn. The loss is particularly hard on Kate, who is also recovering from alcoholism.

Kate Coleman, a mother who has two children named Daniel and Max, is depressed and always has a nightmare after her third child was died. To recover her depression, Kate and her husband—John decided to adopt a child. Finally, they adopt Esther, a 9-year-old Russian girl, from the local orphanage. While Kate and John's deaf daughter Max embraces Esther almost immediately, their son Daniel is less welcoming. In this film, the researcher analyzed the character of Esther.

Esther is an innocent young girl who adopted by a couple, John and Kate at the local orphanage. It is not a long period, she has killed members of family and makes a horror at the home. She has a rare hormone disorder it is called hypopituitarism. It causes proportional dwarfism. She only looks like a child, and lacks the capacity for normal growth. Dwarfism is deliberately produced and perpetuated in certain species (e.g, in breeding miniature dogs and cultivating dwarf plants). Among humans, dwarfism usually results from a combination of genetic factors and endocrine malfunction. In case of orphan movie, it relates to Esther character that has like of capacity for normal growth. So, it causes her character as an evil person.

According to NCBI Hypopituitarism is defined as the total or partial loss of anterior and posterior pituitary

gland function that is caused by pituitary or hypothalamic disorders.

From the explanation above, the researcher would like to analyze the character problem of main character name Esther in Orphan movie with all her problems through Freud's psychoanalysis theory.

Methodology

In this research use descriptive qualitative method. According to Hingham and Crocker (2009:5) qualitative research entails collecting primarily contextual data and examining it using interpretative analysis. It means that, this method gives clear description about the problem that is being researched. In this case the researcher going to analyze the main character in Orphan movie using Sigmund Freud psychoanalysis theory.

The researcher collect some data from available resources like websites those related to this research. The researcher analyzes the main character problem in Orphan by using Sigmund Freud psychoanalysis theory. This descriptive qualitative research sets the researcher as the main instrument in collecting data by watching Orphan carefully, so that she can understand the scenes or the parts describe the problem of the main character and the researcher also collects some related data by writing down some dialogues that support the research.

Discussion

In this chapter, the researcher discusses the character of Esther in major character in Orphan film. The writer analysis Esther's characteristic who stuck in her little body viewed from Freud's Psychoanalysis theory.

The main character in this film is named Esther. She is 9 years-old orphan who lives in the orphanage. Her life as an orphan is ended when Kate and John Coleman decide to adopt her. As 9 years-old child, Esther has so many positive characteristics that make people like her. She is sociable, intelligent, friendly and talented. Those all positive characters are proven when she met Coleman couple for the first time. Among so many positive characteristics that she had, she also has a negative character that she keeps secretly until nobody knows and realizes about it except her step-mother, Kate. In the middle of film, the viewer can see some oddities in her that didn't show in the beginning of film. Unbeknownst her adopted family, Esther has a secret and the negative character that appears in the middle of film shows to the viewer who Esther is and what's wrong with her. Here are some of her negative characteristics that she has :

A. Often Lie

John: "Brenda's father says that you pushed her."

Esther: *"That's not true we were just playing. I swear."*

Kate: (To Max) Okay and did you see what happened?

Max: (Sign with the language) she slipped.

B. Aggressive

Esther's aggressive act is shown when she threatens Daniel with a knife and when she tries to harm Max with the release of the hand brake of the car.

C. Impulsive and Difficult to control Theirself

It shows when she comes to school for the first time and gets bullied by her friend who wants to take her.

Esther's Psychopath in Psychoanalysis

In Psychoanalysis, psychopath is considered as a developmental problem, a disruption of individual personality when they pass the psychosexual stages. For Freud, personality development is considered as something that is cumulative, so the disturbances in the early days will be an advanced development of traumatic events which take effect until the individual is adult. As Freud says, the psychosexual stages are divided into 5, they are: Oral stage, anal stage, phallic stage, Latency stage and Genital stage.

In the Esther's case, Esther who always tries to find her step father's attention to removes her step mother, show us that Esther psychosexual development didn't perfect. Esther's psychosexual development has fixation in phallic stage, when the child is more love their parents of different sex. So when Esther cannot pass the phallic stage successfully, she also cannot through the latency and genital stage.

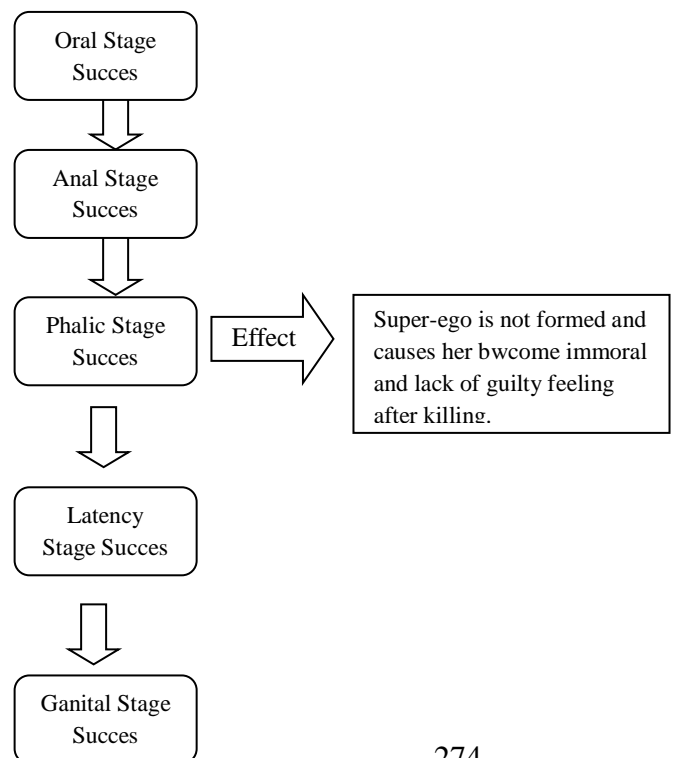
In phallic stage, there is an erotic feeling in child to their parents who has different sex. If the individual has failed in phallic stage, can cause the emotional disturbances in the future because the super-ego is form in the last period of phallic stage. If the individual has failed in this phallic stage, that individual is certainly will become someone who amoral, inhuman, and doesn't have any guilty feeling after did bad thing.

Even so with Esther, the failure psychosexual development causes her doesn't use her super-ego when do something. When she murders, the super-ego which has a job to remind someone of the merits of her action doesn't work. Esther becomes someone who doesn't have conscience. Esther's id is more powerful than her Ego and super ego. Esther who tries to get her step-father attention and seduce him is the effect of her imperfect phallic stage where this stage is the time of the child has a sexual cachexia of their parent who

has different sex and hostility cachexia to their parent who has same sex. When this stage is takes place, the boy wants to own her mother and daughter wants to own her father.

As we know, in the last period phallic stage, the super-ego is begun to form. That super ego will help the individual to pass this stage perfectly. The super ego will help the individual to know and understand the moral values (e.g. guilty feeling, the merits of the action etc.) The individual will learn how to express the aggressive impulse constructively such as healthy competition. If the super ego is too weak, loose and allow everything, then that individual is lack of guilty feeling and apply it their will.

For more details, let's see the table below:



Since Esther cannot pass phallic stage perfectly, she also cannot pass the latency stage and genital stage. Her imperfect in latency and genital stage can be seen from her incapability in socializing and unable to maintain a long relationship with someone. The identity confusion of her is also imperfect genital stage. According to Freud, the individual who has failed in Oral, Anal or Phallic stage has their characteristic.

The imperfect of Esther's phallic stage made her characteristic become someone who always tries to seduce a man with her seductive behavior. Her dissatisfaction which she doesn't have in phallic stage, made her naïve, who always hide her true feeling into the lie even her identity. Then her seductive can be seen with her behavior that always attract her step-father attention and finally seduce him while her step father was drunken.

From the explanation above, the writer can conclude that the imperfect of Esther's psychosexual development become the main cause of Esther's psychopath. In Esther's case, the super-ego in Esther is too weak because she cannot uses her super-ego when she does something wrong, her weak super ego and her immoral character in this film prove to the researcher that she has a fixation in phallic stage.

Conclusion

In this research, the researcher analyzez the main character of Orphan film named Esther to understand her characteristic described in the film uses psychoanalysis theory by Sigmund Freud to know and deepen the causes of Esther's characteristic problem.

As the result after analyzing the film, the researcher gets the conclusion that Esther's characteristic problem is the effect of the imperfect of her phallic stage. It can be seen when she always tries to get her step-father's attention and remove the rest of his family as be rival in possessing her father. Another impact of the imperfect phallic stage, makes Esther's super-ego doesn't work well when she does the bad thing such as killing. Esther becomes the girl that has negative character such as : liar, aggressive, impulsive and hard to control and etc.

Reference

Milawaty. 2011. *A Major Character Analysis of Orphan Movie* (Degree of English Letters Department, State Islamic University Syarif Hidayatullah Jakarta). Retrieved from <http://repository.uinjkt.ac.id/dspace/bitstream/123456789/5394/1/MILAWATY-FAH.pdf>

- Maulanie, Nurul Hikmah. (2011). *An Analysis of Esther's Psychopath Problem In Orphan Film Viewed from Psychoanalysis Theory by Sigmund Freud* (Strata 1 degree of English Letters Department, State Islamic University Syarif Hidayatullah Jakarta). Retrieved from <https://id.123dok.com/document/6qm83x5z-an-analysis-of-esther-s-psychopath-problem-in-orphan-film-viewed-from-psychoanalysis-theory-by-sigmund-freud.html>
- Nisrina, Shofa. (2014, October, 22). *Orphan*. Retrieved from <https://shofanisrina.wordpress.com/2014/10/22/orphan/>
- Kim, Seong Yeon. (2015, December). *Diagnosis and Treatment of Hypopituitarism*. Retrieved from <https://www.ncbi.nlm.nih.gov/pmc/articles/PMC4722397/>